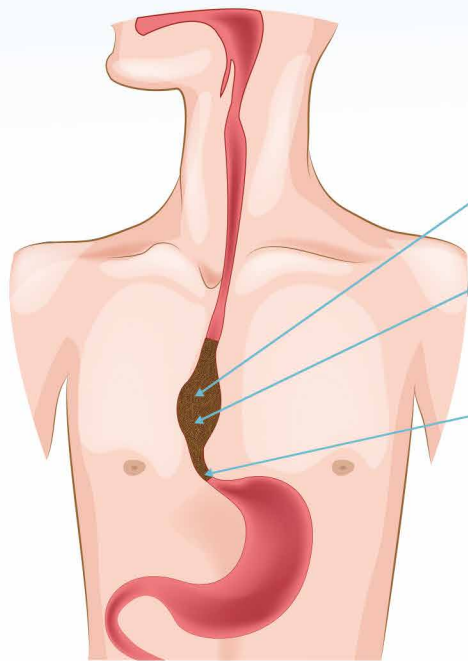


# Food not going down properly? Painful chest spasms? Ask your Doctor about **Achalasia**



Food debris stuck

Oesophagus becomes dilated

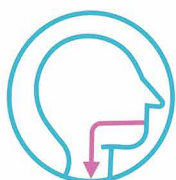
Narrowing at the junction with  
stomach lower oesophageal sphincter

## Information | Support | Encouraging Research

Achalasia is a rare, sometimes painful medical condition experienced by around 6,000 people in the UK that affects swallowing and the ability of food to pass through the oesophagus and into the stomach. Achalasia Action is here to help you.

### Helpline 0300 772 7795

### Email [admin@achalasia-action.org](mailto:admin@achalasia-action.org)



## ACHALASIA ACTION

*Uniting for a rare swallowing condition*

Achalasia Action Charity  
Registered Number 1187367  
(England & Wales)

[www.achalasia-action.org](http://www.achalasia-action.org)



Scan Me

Funded by



HM Government

In partnership with

THE NATIONAL LOTTERY  
COMMUNITY FUND